



**SUPERIOR ROOF METALS**

[SUPERIORROOFMETALS.COM](http://SUPERIORROOFMETALS.COM)

# Products & Services

Superior Roof Metals is the premier supplier for standing seam metal roofing systems, custom flashings, rainwear goods and wall systems in northern California. We specialize in factory formed and site fabricated engineered metal roofing systems to meet all of your commercial and residential roofing needs. We also offer coil and sheet products for all project types.

Our locations feature state-of-the-art equipment, featuring a curver for standing seam roofing panels, multiple 20-foot breaks, stamp presses, down spout machines, a cut-to-length line and a slitter.

We have partnered with Sheffield Metals International and have a large inventory of over 30 colors in stock at all times with a 35-year finish warranty, and two northern California locations, as well for us to be able to respond to the most critical roofing needs of our customers. We are a family-owned business and want to maintain that feel in all our customer interactions while being able to provide the same products and services of our “big-box” competitors.



**Metal Roofing Panels**



**Vents**



**Clips**



**Underlayment**



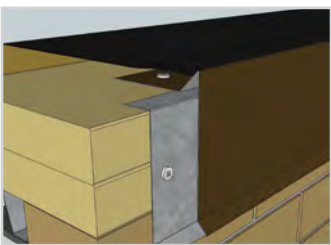
**Pipe Flashings**



**Coil & Sheet Products**

# Perimeter Edging Systems

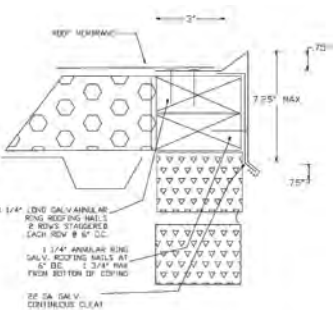
The IBC building code requires that all low slope roofing systems (built up asphalt, single ply, modified, etc.) use perimeter metal details that have tested according to the ANSI / SPRI ES-1 testing procedure. This applies to copings, gravel stops, and metal edgings. Most states have adopted the provisions of the IBC building code. ULTRA SEAM has developed a line of coping, gravel stops, and edging that have been tested in both aluminum and steel options. We have standard and snap lock versions of each type of trim.



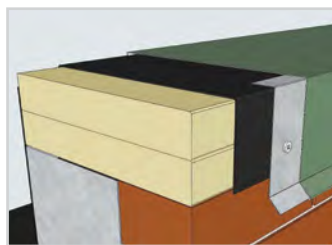
## GS Series Gravel Stop

ES-1 TESTED!

The Standard Style Gravel Stop (GS Series) has a fast and simple installation procedure. This system is utilized with asphalt and modified systems that will seal to the flange, and with other membranes that require a strip-in.



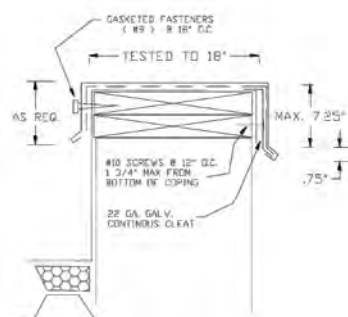
GS SERIES ( GRAVEL-STOP STANDARD ) GRAVEL STOPS ARE AVAILABLE IN VARIOUS METALS. THEY ARE ES-1 TESTED IN 24 GA. STEEL AND .040 ALUMINUM. MAXIMUM TESTED FACE SIZE IS 8" . CALL ULTRA SEAM FOR DETAILS.



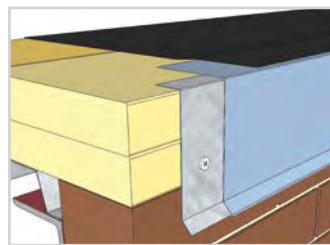
## SC Series Coping

ES-1 TESTED!

The Ultra Seam Standard Style Coping (SC Series Coping) is a traditional style coping that is fast and simple to install. Front cleat interlock and backside thru fastening provides secure perimeter attachment of the roof membrane.



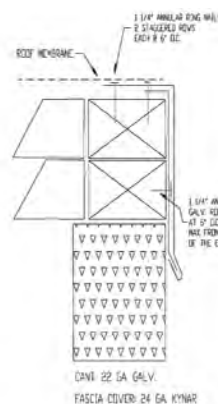
SC SERIES ( STANDARD STYLE ) COPINGS ARE AVAILABLE IN VARIOUS METALS. THEY ARE ES-1 TESTED IN 24 GA. STEEL AND .040 ALUMINUM. MAXIMUM TESTED FACE SIZE IS 8" . CALL ULTRA SEAM FOR DETAILS.



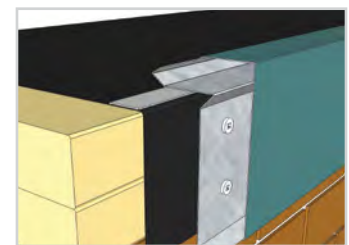
## SE Series Edgings

ES-1 TESTED!

The Standard Edging (SE Series Edging) is a traditional style edging that is easy to install. It requires the membrane to be sealed to the edging flange after the installation of the edging. This is well-suited for asphalt or modified roofs or other membranes when unobstructed water drainage is needed.



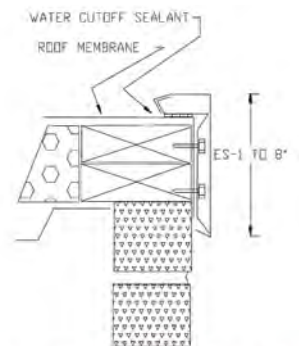
SE SERIES EDGINGS ARE AVAILABLE IN VARIOUS METALS. THEY ARE ES-1 TESTED IN 24 GA. STEEL AND .040 ALUMINUM. MAXIMUM TESTED FACE SIZE IS 8" . CALL ULTRA SEAM FOR DETAILS.



## UE Series Edging

ES-1 TESTED!

Ultra Edge (UE Series Edging) is a snap lock style edging that has a fast and simple installation procedure that reduces your labor costs and increases profits. This system allows you to complete the installation of your roof membrane without having your sheet metal installers on the project. When you install the Ultra Edge, you will not need to have the roofers return to the project to strip in the edging.

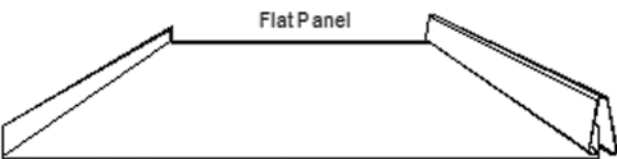
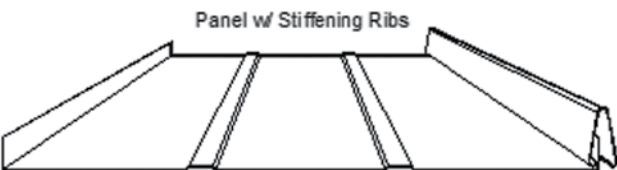
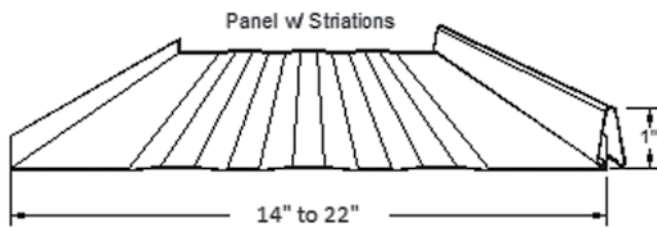


UE SERIES ( ULTRA EDGE ) EDGINGS ARE AVAILABLE IN VARIOUS METALS. THEY ARE ES-1 TESTED IN 24 GA. STEEL AND .040 ALUMINUM. MAXIMUM TESTED FACE SIZE IS 8" . CALL ULTRA SEAM FOR DETAILS.

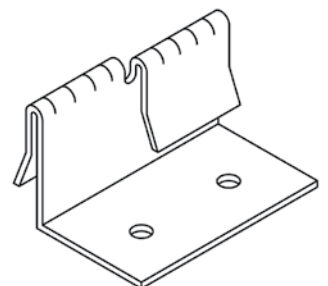
# Metal Roof Panels

## Superior CS100 1" Cap Seam / Batten

- Snap-On Standing Seam metal roofing system
- Galvanized, Galvalume, Aluminum and Copper
- Kynar 500® Finish with a 20 year warranty
- Continuous length panels
- Optional stiffening ribs and striations (to minimize oil canning)
- ASTM E 331 Water Infiltration Tested
- ASTM E 283 Air infiltration Tested



Panel Clip



# Metal Roof Panels

## Superior SLN100 1" Snap Lock Nail Strip

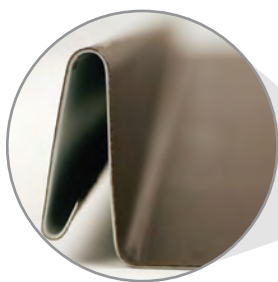
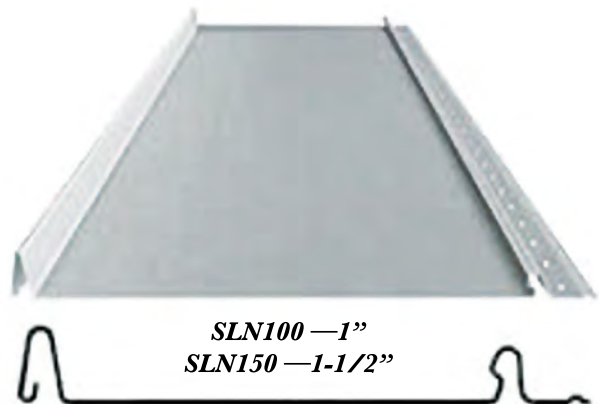
## Superior SLN150 1.5" Snap Lock Nail Strip

### GAUGE

- .032, .040 Aluminum
- .24 gauge Metallic Coated Steel

### SPECS

- Panel Widths:
  - SLN100 - 18-13/16" or 14-13/16"
  - SLN150 - 18-13/16" or 14-13/16"
- Panel Length: Cut to customer specifications with a min. of 4'; roll-forming available for longer lengths
- Seam Heights:
  - SLN100 - 1"
  - SLN150 - 1-1/2"
- Finish: Kynar 500® or Hylar 5000® PVDF
- Colors: Choice of 29 standard colors
- Minimum Pitch: 3:12
- Available with or without ribs or striations (not available in curved)
- Inquire for availability



# Metal Roof Panels



## Superior MS150 1.5" Mechanical Seam

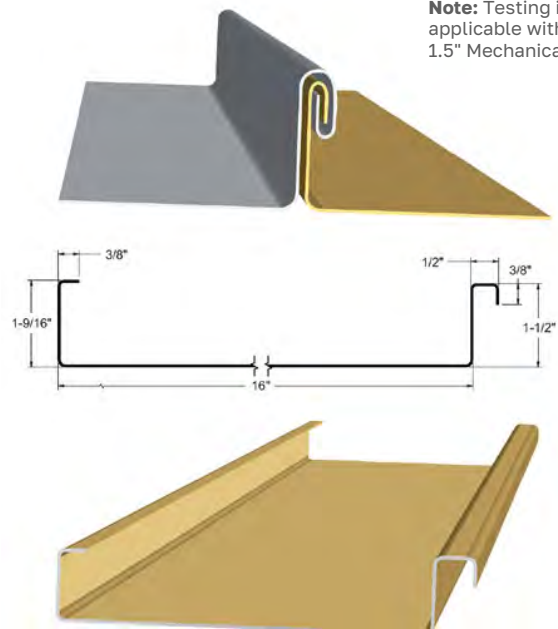
### PANEL INFORMATION

- Panel Type: Standing Seam
- Panel Seam: Mechanical
- Panel Width: 16"
- Seam Height: 1.5"
- Panel Material: 24 GA Min
- Panel Surface: Smooth/Embossed Optional
- Panel Clip: Required Per Engineering
- Minimum Slope: 2/12
- Substrate: Plywood, B-Deck, B-Deck w/ISO

### PANEL TESTING

- Uplift Resistance: UL 580, UL 1897, UL 90
- Air Infiltration: ASTM E 1680
- Water Penetration: ASTM E 1646
- Water Submersion: ASTM E 2140
- Hail Rating: Class 4 Impact UL 2218
- Fire Rating: UL Class A

**Note:** Testing is only applicable with the SMI 1.5" Mechanical Seam.



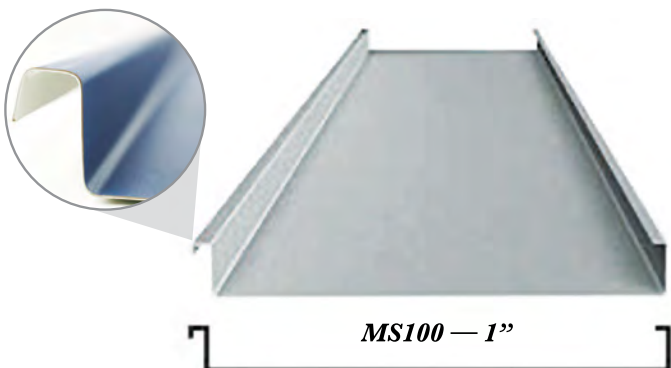
## Superior CS100 1" Cap Seam / Batten

### GAUGE

- .032 Aluminum
- 24 ga. Metallic Coated Steel
- 24 ga. Zinc

### SPECS

- Panel Width: 21-1/4" or 17-1/4"
- Panel Length: Cut to customer specifications with a min. of 4'; roll-forming available for longer lengths
- Seam Height: 1"
- Finish: Kynar 500® or Hylar 5000® PVDF
- Colors: Choice of 29 standard colors
- Minimum Pitch: 1/4:12
- Optional Sealant is available for all panels.
- Available with or without ribs or striations (not available in curved)



MS100 — 1"

# Metal Roof Panels

## Superior SL100 1" Snap Lock /

## Superior SL150 1.5" Snap Lock

### PANEL INFORMATION

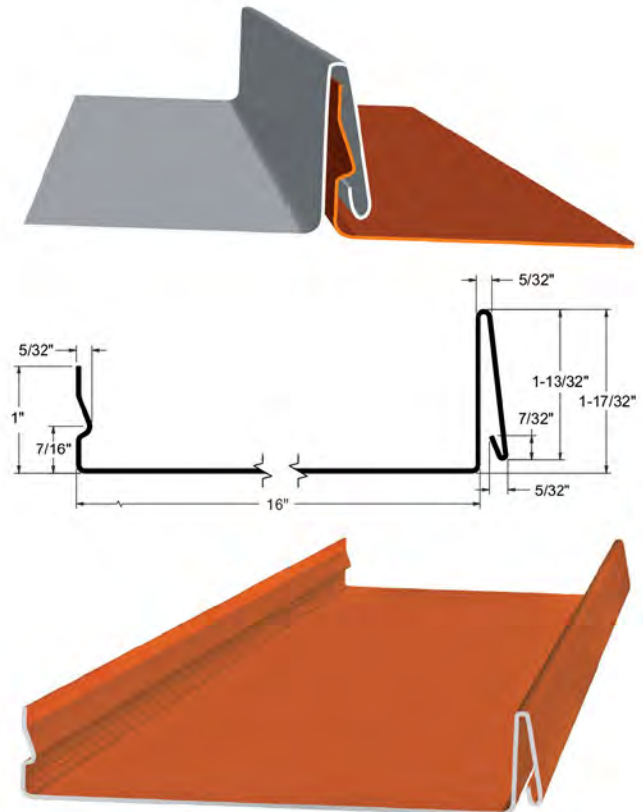
- Panel Type: Standing Seam
- Panel Seam: Snap Lock
- Panel Width: 16"
- Seam Heights: SL100 - 1", SL150 - 1.5"
- Panel Material: 24 GA Min
- Panel Surface: Smooth/Embossed Optional
- Panel Clip: Required Per Engineering
- Minimum Slope: 2/12
- Substrate: Plywood

### PANEL TESTING

- Uplift Resistance: UL 90
- Hail Rating: Class 4 Impact UL 2218
- Fire Rating: UL Class A

### PANEL NOTES

- With this 24 GA, 16" wide panel engineering, you may opt to use heavier gauge coil and narrower width panels. Clip spacing will not change.
- This panel uses a 20" coil.
- This panel uses 4-1/8" of material to form the panel.
- If you take the square footage of the roof and multiply that by 1.25, the total will be the amount of coil needed to manufacture the panels.
- This panel is approved for Weathertight Warranties.



# Metal Roof Panels

## Superior SL175 1.75" Snap Lock

### PANEL INFORMATION

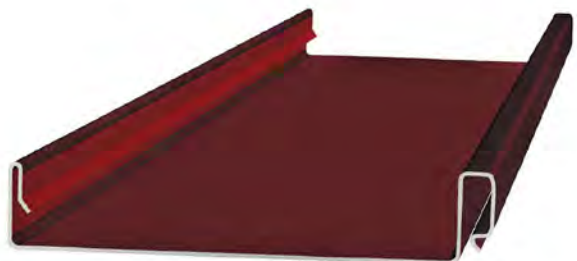
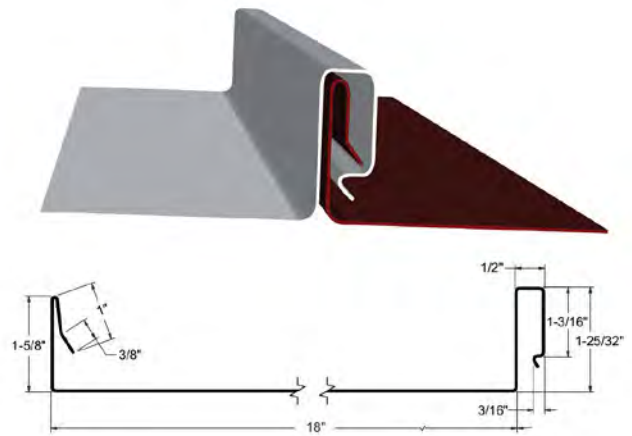
- Panel Type: Standing Seam
- Panel Seam: Snap Lock
- Panel Width: 18"
- Seam Height: 1.75"
- Panel Material: 24 GA Min
- Panel Surface: Smooth/Embossed Optional
- Panel Clip: Required Per Engineering
- Minimum Slope: 2/12
- Substrate: Plywood, B-Deck, B-Deck w/ISO

### PANEL TESTING

- Uplift Resistance: UL 580, UL 1897, UL 90
- Air Infiltration: ASTM E 1680
- Water Penetration: ASTM E 1646, ASTM E-1592 Tested (US-175 LS)
- Hail Rating: Class 4 Impact UL 2218
- Fire Rating: UL Class A

### PANEL NOTES

- With this 24 GA, 18" wide panel engineering, you may opt to use heavier gauge coil and narrower width panels. Clip spacing will not change.
- This panel uses a 24" coil. Maximum width coil of 24".
- This panel uses 6-1/8" of material to form the panel.
- If you take the square footage of the roof and multiply that by 1.34, the total will be the amount of coil needed to manufacture the panels.
- This panel is approved for Weathertight Warranties.





# Metal Roof Panels

## Superior MS200 2" Mechanical Seam

### PANEL INFORMATION

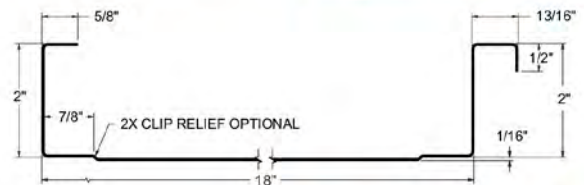
- Panel Type: Standing Seam
- Panel Seam: Mechanical
- Panel Width: 18"
- Seam Height: 2.0"
- Panel Material: 24 GA Min
- Panel Surface: Smooth/Embossed Optional
- Panel Clip: Required Per Engineering
- Minimum Slope: .5/12
- Substrate: Open Framing, Plywood, B-Deck, B-Deck w/ISO

### PANEL TESTING

- Uplift Resistance: ASTM E1592, UL 580, UL 1897, UL 90
- Air Infiltration: ASTM E 1680
- Water Penetration: ASTM E 1646
- Water Submersion: ASTM E 2140, 100 MPH Wind-Driven Rain Infiltration (US-200) Resistance Tested
- Foot Traffic: FM 4471
- Hail Rating: Class 4 Impact UL 2218
- Fire Rating: UL Class A

### PANEL NOTES

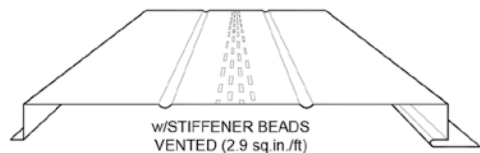
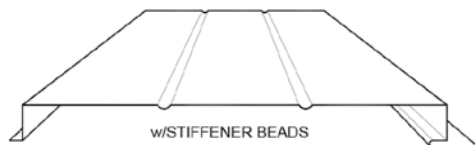
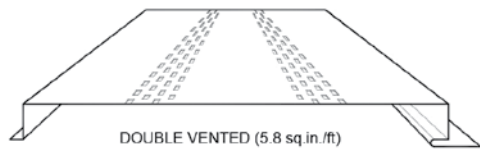
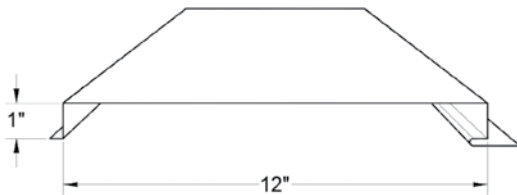
- With this 24 GA, 18" wide panel engineering, you may opt to use heavier gauge coil and narrower width panels. Clip spacing will not change.
- For slopes lower than a 2/12 roof pitch, install sealant per ASTM E 2140.
- This panel uses a 24" coil. Maximum width coil of 24".
- This panel uses 5-13/16" of material to form the panel.
- If you take the square footage of the roof and multiply that by 1.34, the total will be the amount of coil needed to manufacture the panels.
- This panel is approved for Weathertight Warranties.



# Metal Roof Panels

## Superior FP100 1" Flush / Wall / Soffit

- Flush panel for wall and soffit systems
- Galvanized, Zinalume®, Galvalume®, Aluminum and Copper
- ASTM E1646-95 Water Penetration Tested
- ASTM E1680-95 Air Infiltration Tested
- Kynar 500® Finish with a 20 year warranty
- Continuous length panels
- Optional vents



# Color Selection

## ENVIRONMENTALLY SMART COLORS

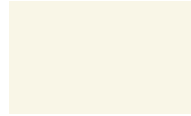
Designed Energy Efficient



TERRA COTTA



AGED COPPER



SOLAR WHITE



SANDSTONE



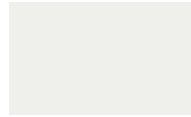
SURREY BEIGE



COLONIAL RED



PATINA GREEN



REGAL WHITE



ASH GRAY



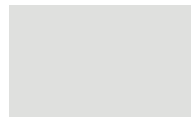
SIERRA TAN



REGAL RED \*



HEMLOCK GREEN \*



STONE WHITE



DOVE GRAY



MEDIUM BRONZE



BURGUNDY \*



HARTFORD GREEN \*



SLATE BLUE



SLATE GRAY



MANSARD BROWN



MATTE BLACK



EVERGREEN



REGAL BLUE \*



CHARCOAL GRAY



DARK BRONZE

## METALLIC COLORS



SILVER \*



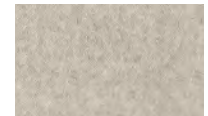
COPPER \*



CHAMPAGNE \*

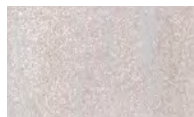


PRE-WEATHERED \* GALVALUME®



ACRYLIC COATED GALVALUME®

## WEATHERED COLORS



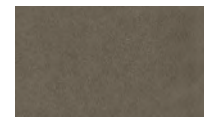
GALV-TEN™ RAW \*



COPPER-TEN™ RAW \*



COR-TEN AZP® RAW \*



VINTAGE®

Colors shown are matched as accurately as possible, but may vary slightly from finished product. These rich and vibrant colors are produced with either Kynar 500® or Hylar 5000® resins, which provide superior color retention and allow Sheffield Metals to offer non-prorated coating warranties for most applications. Coating warranty varies for Regal Red, Matte Black, Copper, Champagne and Pre-Weathered Galvalume. Metallics are warranted for chip, crack and peel only. Please contact your representative for more information.

\* Available at a slight price premium.

\* Also available in Robust.



**SUPERIOR**  
ROOF METALS

890 Faulstich Court  
San Jose, CA 95112

Phone: 408-295-0911  
Toll-Free: 888-331-2233  
Fax: 408-295-4943

[SuperiorRoofMetals.com](http://SuperiorRoofMetals.com)

