



SUPERIOR ROOF METALS

SUPERIORROOFMETALS.COM

Products & Services

Superior Roof Metals is the premier supplier for standing seam metal roofing systems, custom flashings, rainwear goods and wall systems in northern California. We specialize in factory formed and site fabricated engineered metal roofing systems to meet all of your commercial and residential roofing needs. We also offer coil and sheet products for all project types.

Our locations feature state-of-the-art equipment, featuring a curver for standing seam roofing panels, multiple 20-foot breaks, stamp presses, down spout machines, a cut-to-length line and a slitter.

We have partnered with Sheffield Metals International and have a large inventory of over 30 colors in stock at all times with a 35-year finish warranty, and two northern California locations, as well for us to be able to respond to the most critical roofing needs of our customers. We are a family-owned business and want to maintain that feel in all our customer interactions while being able to provide the same products and services of our “big-box” competitors.



Metal Roofing Panels



Vents



Clips



Underlayment



Pipe Flashings



Coil & Sheet Products

Custom Fabrication Shop



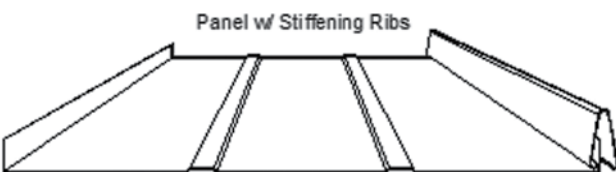
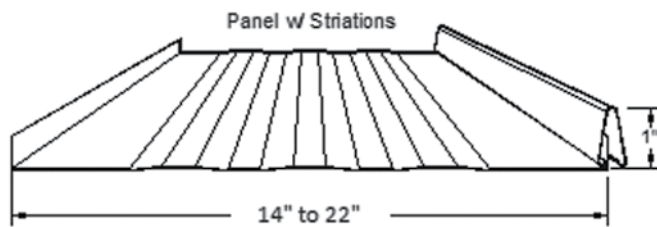
The Sheet Metal Products You Need, Right When You Need Them

Superior Roof Metals is proud to offer high quality metal panels. Alongside panels, we also offer complete trim packages. With our 20' folders, shear, and cut to length line we proudly say, "if you can draw it, we can make it". From Battons to Z bar, Cap Metal to Sleeper Caps we are well equipped and trained to provide all of your sheet metal needs in a timely manner.

Metal Roof Panels

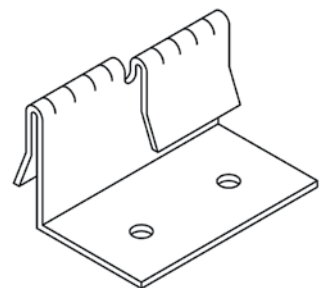
Superior CS100 1" Cap Seam / Batten

- Snap-On Standing Seam metal roofing system
- Galvanized, Galvalume, Aluminum and Copper
- Kynar 500® Finish with a 20 year warranty
- Continuous length panels
- Optional stiffening ribs and striations (to minimize oil canning)
- ASTM E 331 Water Infiltration Tested
- ASTM E 283 Air infiltration Tested



Curving available in a minimum 10'-0" radius

Panel Clip



Metal Roof Panels

Superior SLN100 1" Snap Lock Nail Strip

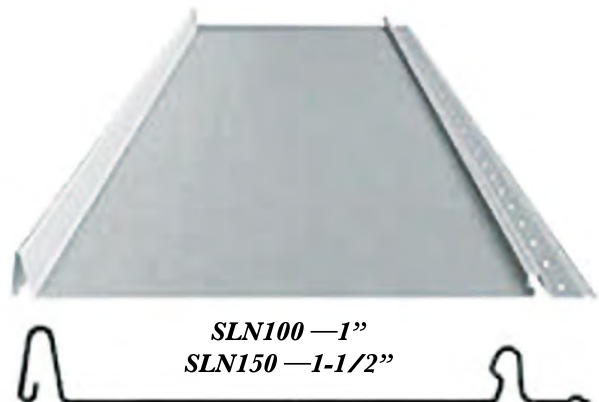
Superior SLN150 1.5" Snap Lock Nail Strip

GAUGE

- .032, .040 Aluminum
- .24 gauge Metallic Coated Steel

SPECS

- Panel Widths:
 - SLN100 - 18-13/16" or 14-13/16"
 - SLN150 - 18-13/16" or 14-13/16"
- Panel Length: Cut to customer specifications with a min. of 4'; roll-forming available for longer lengths
- Seam Heights:
 - SLN100 - 1"
 - SLN150 - 1-1/2"
- Finish: Kynar 500® or Hylar 5000® PVDF
- Colors: Choice of 29 standard colors
- Minimum Pitch: 3:12
- Available with or without ribs or striations (not available in curved)
- Inquire for availability



Metal Roof Panels



Superior MS150 1.5" Mechanical Seam

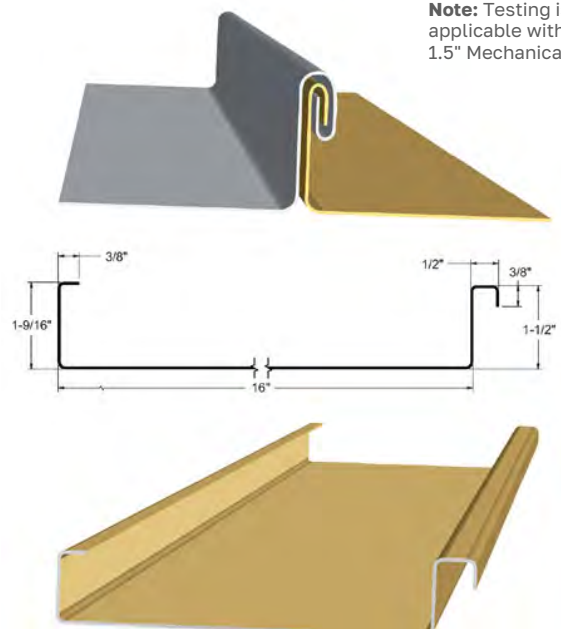
PANEL INFORMATION

- Panel Type: Standing Seam
- Panel Seam: Mechanical
- Panel Width: 16"
- Seam Height: 1.5"
- Panel Material: 24 GA Min
- Panel Surface: Smooth/Embossed Optional
- Panel Clip: Required Per Engineering
- Minimum Slope: 2/12
- Substrate: Plywood, B-Deck, B-Deck w/ISO

PANEL TESTING

- Uplift Resistance: UL 580, UL 1897, UL 90
- Air Infiltration: ASTM E 1680
- Water Penetration: ASTM E 1646
- Water Submersion: ASTM E 2140
- Hail Rating: Class 4 Impact UL 2218
- Fire Rating: UL Class A

Note: Testing is only applicable with the SMI 1.5" Mechanical Seam.



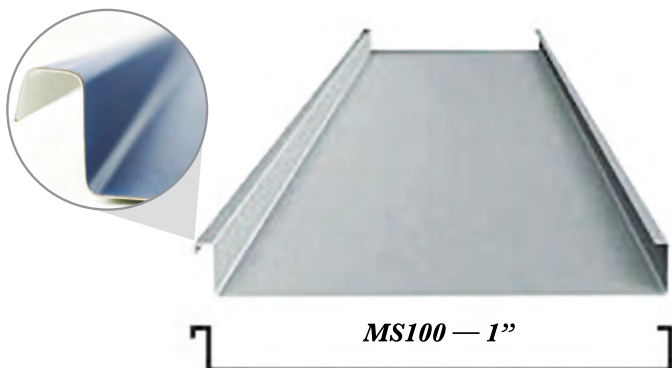
Superior CS100 1" Cap Seam / Batten

GAUGE

- .032 Aluminum
- 24 ga. Metallic Coated Steel
- 24 ga. Zinc

SPECS

- Panel Width: 21-1/4" or 17-1/4"
- Panel Length: Cut to customer specifications with a min. of 4'; roll-forming available for longer lengths
- Seam Height: 1"
- Finish: Kynar 500® or Hylar 5000® PVDF
- Colors: Choice of 29 standard colors
- Minimum Pitch: 1/4:12
- Optional Sealant is available for all panels.
- Available with or without ribs or striations (not available in curved)



Metal Roof Panels

Superior SL100 1" Snap Lock /

Superior SL150 1.5" Snap Lock

PANEL INFORMATION

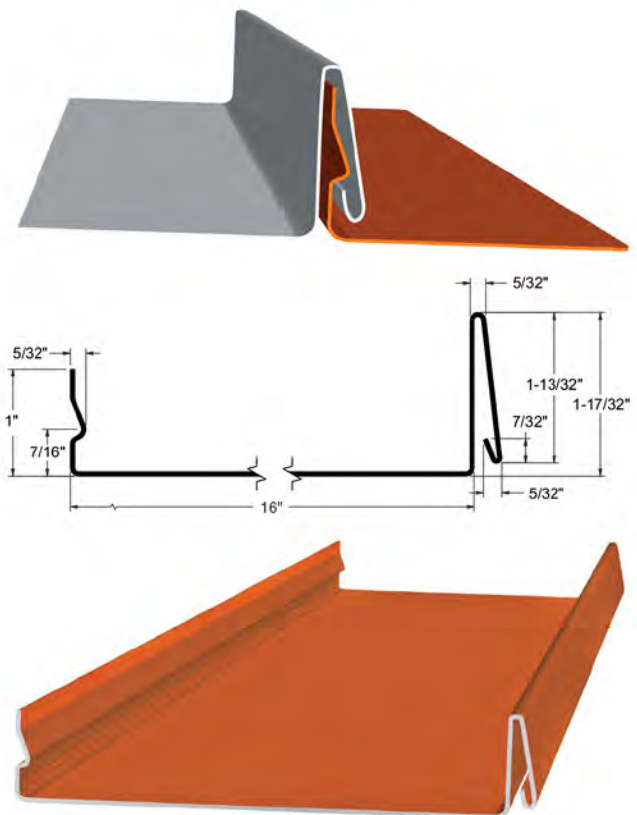
- Panel Type: Standing Seam
- Panel Seam: Snap Lock
- Panel Width: 16"
- Seam Heights: SL100 - 1", SL150 - 1.5"
- Panel Material: 24 GA Min
- Panel Surface: Smooth/Embossed Optional
- Panel Clip: Required Per Engineering
- Minimum Slope: 2/12
- Substrate: Plywood

PANEL TESTING

- Uplift Resistance: UL 90
- Hail Rating: Class 4 Impact UL 2218
- Fire Rating: UL Class A

PANEL NOTES

- With this 24 GA, 16" wide panel engineering, you may opt to use heavier gauge coil and narrower width panels. Clip spacing will not change.
- This panel uses a 20" coil.
- This panel uses 4-1/8" of material to form the panel.
- If you take the square footage of the roof and multiply that by 1.25, the total will be the amount of coil needed to manufacture the panels.
- This panel is approved for Weathertight Warranties.



Metal Roof Panels

Superior SL175 1.75" Snap Lock

PANEL INFORMATION

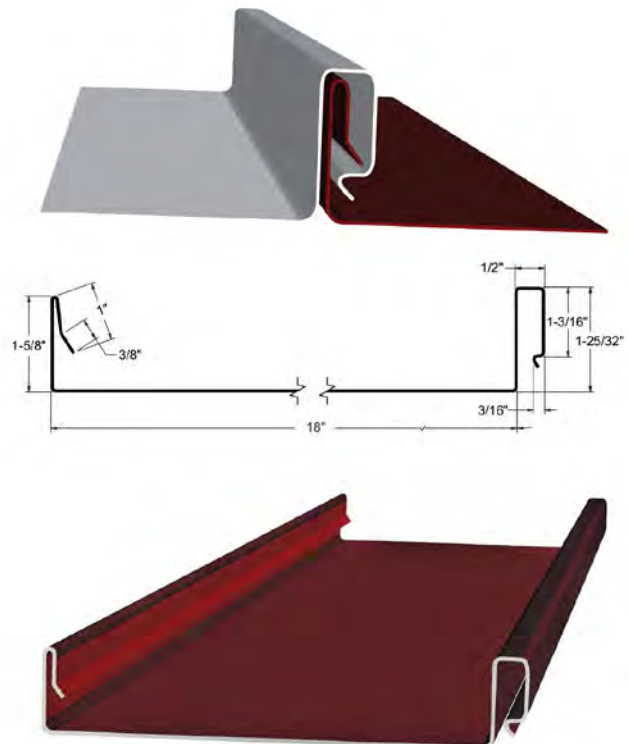
- Panel Type: Standing Seam
- Panel Seam: Snap Lock
- Panel Width: 18"
- Seam Height: 1.75"
- Panel Material: 24 GA Min
- Panel Surface: Smooth/Embossed Optional
- Panel Clip: Required Per Engineering
- Minimum Slope: 2/12
- Substrate: Plywood, B-Deck, B-Deck w/ISO

PANEL TESTING

- Uplift Resistance: UL 580, UL 1897, UL 90
- Air Infiltration: ASTM E 1680
- Water Penetration: ASTM E 1646, ASTM E-1592 Tested (US-175 LS)
- Hail Rating: Class 4 Impact UL 2218
- Fire Rating: UL Class A

PANEL NOTES

- With this 24 GA, 18" wide panel engineering, you may opt to use heavier gauge coil and narrower width panels. Clip spacing will not change.
- This panel uses a 24" coil. Maximum width coil of 24".
- This panel uses 6-1/8" of material to form the panel.
- If you take the square footage of the roof and multiply that by 1.34, the total will be the amount of coil needed to manufacture the panels.
- This panel is approved for Weathertight Warranties.



Metal Roof Panels

Superior MS200 2" Mechanical Seam

PANEL INFORMATION

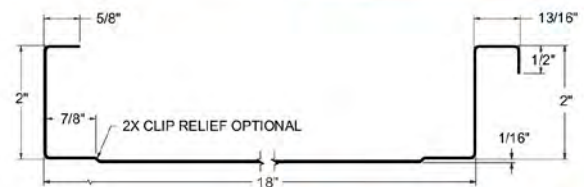
- Panel Type: Standing Seam
- Panel Seam: Mechanical
- Panel Width: 18"
- Seam Height: 2.0"
- Panel Material: 24 GA Min
- Panel Surface: Smooth/Embossed Optional
- Panel Clip: Required Per Engineering
- Minimum Slope: .5/12
- Substrate: Open Framing, Plywood, B-Deck, B-Deck w/ISO

PANEL TESTING

- Uplift Resistance: ASTM E1592, UL 580, UL 1897, UL 90
- Air Infiltration: ASTM E 1680
- Water Penetration: ASTM E 1646
- Water Submersion: ASTM E 2140, 100 MPH Wind-Driven Rain Infiltration (US-200) Resistance Tested
- Foot Traffic: FM 4471
- Hail Rating: Class 4 Impact UL 2218
- Fire Rating: UL Class A

PANEL NOTES

- With this 24 GA, 18" wide panel engineering, you may opt to use heavier gauge coil and narrower width panels. Clip spacing will not change.
- For slopes lower than a 2/12 roof pitch, install sealant per ASTM E 2140.
- This panel uses a 24" coil. Maximum width coil of 24".
- This panel uses 5-13/16" of material to form the panel.
- If you take the square footage of the roof and multiply that by 1.34, the total will be the amount of coil needed to manufacture the panels.
- This panel is approved for Weathertight Warranties.

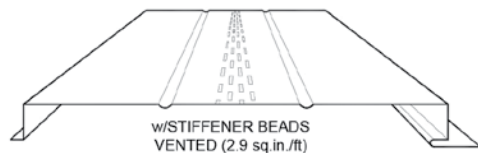
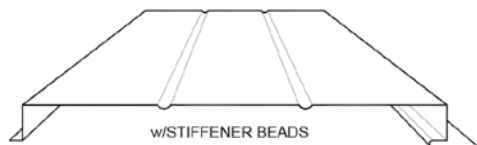
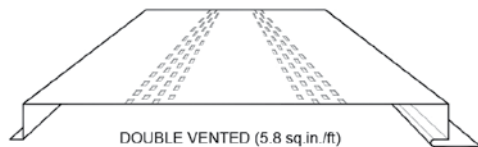
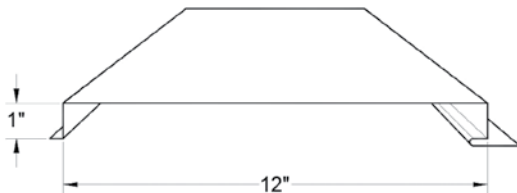


Metal Roof Panels

Superior FP100

1" Flush / Wall / Soffit

- Flush panel for wall and soffit systems
- Galvanized, Zincalume®, Galvalume®, Aluminum and Copper
- ASTM E1646-95 Water Penetration Tested
- ASTM E1680-95 Air Infiltration Tested
- Kynar 500® Finish with a 20 year warranty
- Continuous length panels
- Optional vents



Color Selection

ENVIRONMENTALLY SMART COLORS

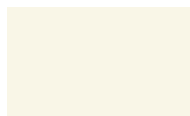
Designed Energy
Efficient



TERRA COTTA



AGED COPPER



SOLAR WHITE



SANDSTONE



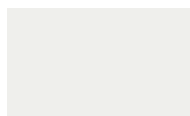
SURREY BEIGE



COLONIAL RED



PATINA GREEN



REGAL WHITE



ASH GRAY



SIERRA TAN



REGAL RED *



HEMLOCK GREEN *



STONE WHITE



DOVE GRAY



MEDIUM BRONZE



BURGUNDY *



HARTFORD GREEN *



SLATE BLUE



SLATE GRAY



MANSARD BROWN



MATTE BLACK



EVERGREEN



REGAL BLUE *

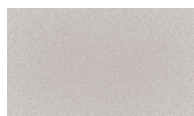


CHARCOAL GRAY



DARK BRONZE

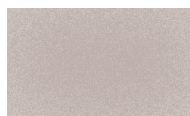
METALLIC COLORS



SILVER *



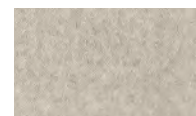
COPPER *



CHAMPAGNE *

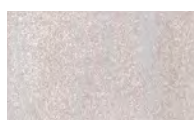


PRE-WEATHERED *
GALVALUME®



ACRYLIC COATED
GALVALUME®

WEATHERED COLORS



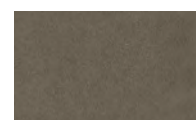
GALV-TEN™ RAW *



COPPER-TEN™ RAW *



COR-TEN AZP® RAW *



VINTAGE®

Colors shown are matched as accurately as possible, but may vary slightly from finished product. These rich and vibrant colors are produced with either Kynar 500® or Hylar 5000® resins, which provide superior color retention and allow Sheffield Metals to offer non-prorated coating warranties for most applications. Coating warranty varies for Regal Red, Matte Black, Copper, Champagne and Pre-Weathered Galvalume. Metallics are warranted for chip, crack and peel only. Please contact your representative for more information.

* Available at a slight price premium.

* Also available in Robust.



SUPERIOR
ROOF METALS

890 Faulstich Court
San Jose, CA 95112

Phone: 408-295-0911
Toll-Free: 888-331-2233
Fax: 408-295-4943

SuperiorRoofMetals.com

